



HIGH DURABILITY
CUT WIRE



HIGH DURABILITY CONDITIONED CUT WIRE FOR SHOT PEENING APPLICATIONS

High durability cut wire to boost the performances of your parts in a cost-efficient and sustainable way.



Characteristics

- High durability for the best cost efficiency
- Homogeneous hardness and particles size for a stable peening effect
- Stringent quality controls to ensure the best performance of the shot-peened components

Main applications

- Springs and suspension components
- Gears and engine components
- Chassis and airframe parts
- Valves and fittings
- Aerospace parts

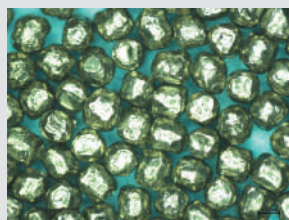
Main end-use markets

- Automotive
- Oil & gas
- Aerospace
- Construction
- Biomedical

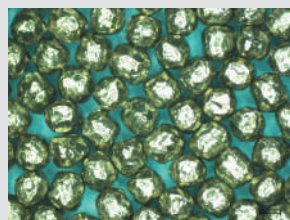
- > Extended lifetime, typically +30% versus regular conditioned cut-wire, thanks to an exclusive production process
- > Stringent quality controls on each batch, certificates available upon dispatch
- > On-site technical assistance by WALUE experts to assess and optimize your process

Size	Hardness ranges	Specifications	Packagings
CW-14 / 0,35 CW-17 / 0,40 CW-20 / 0,50 CW-23 / 0,60 CW-28 / 0,70 CW-32 / 0,80 CW-35 / 0,90 CW-41 / 1,00 CW-47 / 1,20	45-52 HRC (SAE AMS spec.) 55-62 HRC (SAE AMS spec.) 610-670 HV 670-730 HV	SAE J441 VDFI 8001 SAE AMS 2431/3D SAE AMS 2431/8B	20 kg paper bags on 1000 kg pallet 500 kg big bag 1000 kg big bag 2000 lbs metallic drum

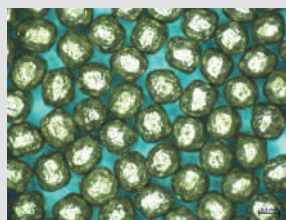
Conditioning levels



G1 (CCW)



G2 (DCCW)



G3 (SCCW)

Other sizes, specifications, packagings & hardness ranges upon request.



Distributed by Winoa

